

Cambridge Street, Wolverhampton



Client Keon Homes
Cost £10m
Services Architecture 0-7 / 3D Visualisation / Landscape Architecture
Status On site

The scheme has been shortlisted for a Housing Design Award and PRS Deal of the Year at this year's RESI Awards 2021.

This proposal provides 64 dwellings, across a mix of terraced houses and apartments, whilst addressing site constraints including heritage assets and conservation, contaminated land and accessibility. The scheme responds to an opportunity in protecting and enhancing the identity of the area, once part of the historically significant Springfield Brewery which operated here between the late 19th and 20th centuries. The tenure mix is 100% Private Rental Sector Housing.

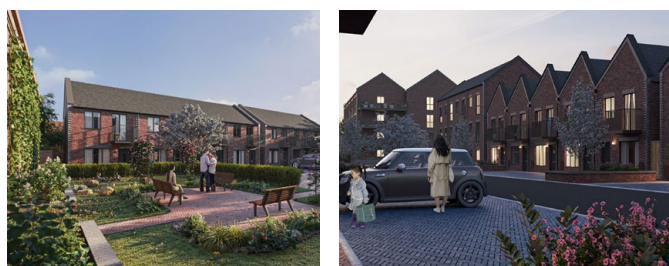
Design Parameters & Response

The design addresses the sensitive heritage context of the site and approach to numerous physical constraints whilst providing a viable residential development for developers.

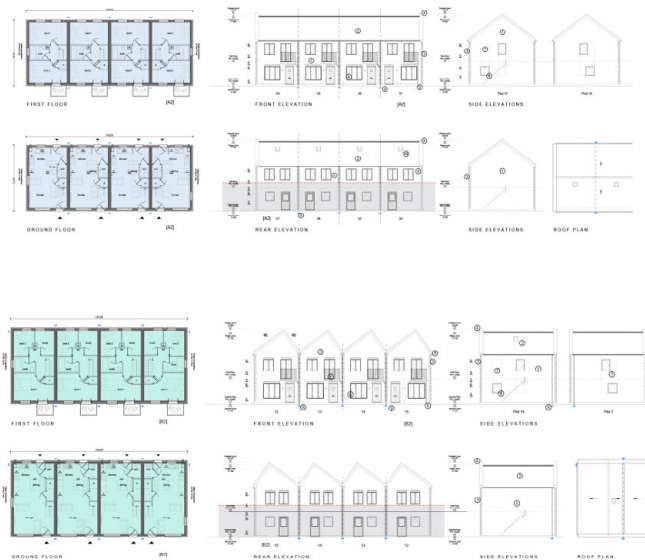
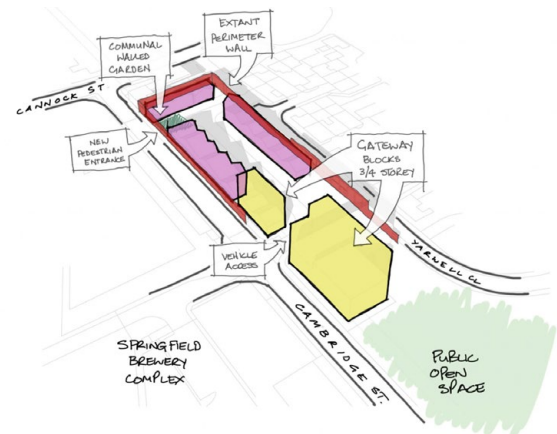
Heritage and planning obligations to retain the extant perimeter wall and push development further away from the centre has supported an innovative regeneration approach to the accommodation which respects the original built-form. Collaboration between the like-minded development team and local authority has brought this long-derelict brownfield site forward, marrying requirements of the site and the needs of the market for quality, sustainable and community-led housing, primarily serving professional couples, singletons and young families.

Construction/Delivery

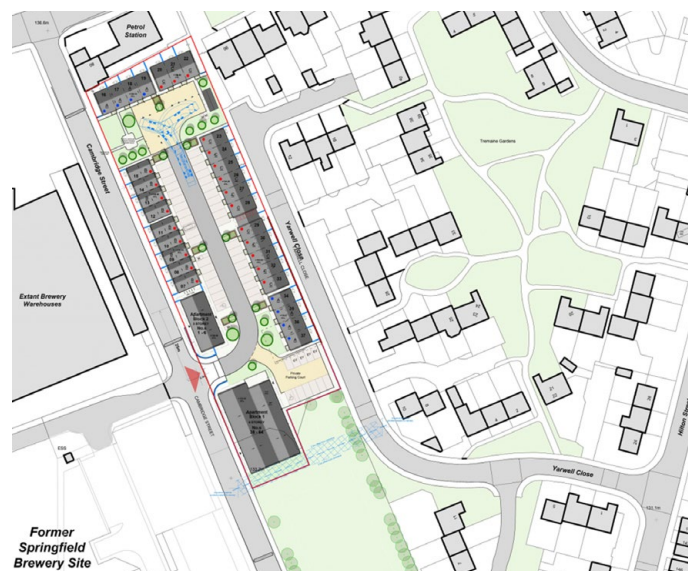
Delivery of the scheme has been carefully considered with the site being constrained and the aspirations of utilising modern methods of construction where possible. This has led to a mixture of off-site timber frame construction and traditional methods to deliver the project. The mix in methodologies offers some freedom in both the programme and to navigate site constraints whilst also maintaining a high level of quality and features within the architectural details.



CGI produced by our in house visualisation team



House Types



Site Layout